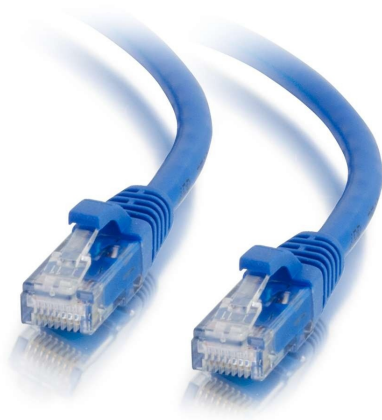




C2G
8ft (2.4m) Cat6a Snagless Unshielded (UTP) Ethernet Network Patch Cable - Blue
Part No. CG-00696



This Snagless Unshielded Cat6a patch cable is ideal for use with 10GBase-T ports and equipment, such as network adapters, hubs, switches, routers, DSL/cable modems and patch panels, and enables 10 Gigabit data transmission over a 4 pair copper cable allowing connections up to 100 meters. Current Cat6 cabling systems may only support 10 Gigabit Ethernet over limited distances. Each patch cable is fully tested to meet ANSI/TIA 568 C.2 Cat6a channel requirements. Constructed from high quality cable and plugs, this design offers improved alien cross talk performance. The Snagless hood is ideal for high density switch applications. Available in a variety of colors to easily color-code a network installation. Individual length label on each cable for ease of use.

Features & Benefits

Designed for network adapters, hubs, switches, routers, HDBaseT applications and more

Supports 10 Gigabit networks up to 328ft for fast data transmission and maximum performance

Meets the ANSI/TIA-568-C.2 Cat6a requirements for supporting a wide variety of applications

Constructed with unshielded twisted pair (UTP) wires, designed to counter EMI, RFI, and crosstalk

Snagless connector design for high density environments and protecting the RJ-45 connector's lock

Available in a variety of colors to color-code a network

Specifications

General Info

Product Line	C2G	Color	Blue
UPC Number	757120006961	Country Of Origin	Vietnam
Features	PoE (Power Over Ethernet)	Application Sector	Commercial, Industrial, Residential
Warranty Type	Lifetime	Type	Cable

Dimensions

Product Length US	8.0 FT	Cable Length	8 ft
Outside Diameter	5.99 mm		

Listing Agencies / 3rd Party Agencies

CE Certified	Yes	REACH Compliant	Yes
--------------	-----	-----------------	-----

Additional Information

RoHS Compliant	Yes
----------------	-----

Technical Information

Jacket Material	PVC (Polyvinyl Chloride)	Category Performance Rating	Cat 6a
Wire Gauge	26 AWG	Shielded/Unshielded	Unshielded
Conductor	4-Pair Twisted	Shield Type	UTP
Cable Type	Ethernet Patch Cable	Jacket Rating	Standard / Non-Rated
Cable Diameter	6 mm	Connector Type	Booted, Snagless
Indoor/Outdoor	Indoor	Connector 2	RJ-45 Male
Connector 1	RJ-45 Male	Insulation Material	HDPE (High-density Polyethylene)
