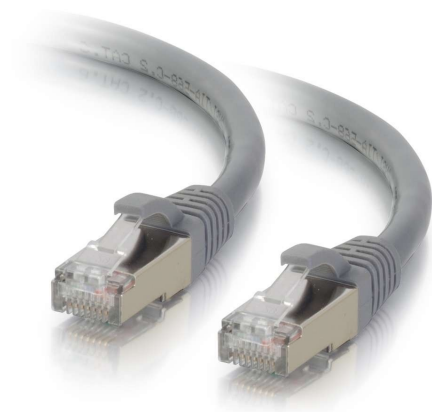




C2G
0.5ft (0.15m) Cat6 Snagless Shielded (STP) Ethernet Network Patch Cable - Gray
Part No. CG-00979



Protect a high speed network from noise and electromagnetic interference when connecting with our Snagless Shielded Cat6 patch cable. For voice/data/video distribution, this cable will handle bandwidth-intensive applications and drastically reduces both impedance and structural return loss (SRL). Each patch cable is fully tested to meet ANSI/TIA 568 C.2 Cat6 component requirements. Each of the individual pairs is bonded together to help maintain the twist-spacing throughout the line right up to the termination point. Constructed from high quality cable and plugs, this design minimizes Near-End Crosstalk (NEXT) levels. Available in a variety of colors to easily color-code a network installation. Individual length label on each cable for ease of use.

Features & Benefits

Designed for network adapters, hubs, switches, routers, HDBaseT applications and more

Supports 10 Gigabit networks up to 180ft for fast data transmission and maximum performance and supports 1 Gigabit up to 328ft

Meets the ANSI/TIA-568-C.2 Cat6 requirements for supporting a wide variety of applications

Constructed with shielded twisted pair (STP) wires, designed to protect a high speed network from noise and electromagnetic interference

Snagless connector design for high density environments and protecting the RJ-45 connector's lock

Available in a variety of colors to color-code a network

Specifications

General Info

Product Line	C2G	Color	Gray
UPC Number	757120009795	Country Of Origin	Vietnam
Features	PoE (Power Over Ethernet)	Application Sector	Commercial, Industrial, Residential
Warranty Type	Lifetime	Type	Cable

Dimensions

Product Length US	0.5 FT	Cable Length	0.5 ft
Outside Diameter	6.09 mm		

Listing Agencies / 3rd Party Agencies

CE Certified

Yes

REACH Compliant

Yes

Additional Information

RoHS Compliant

Yes

Technical Information

Jacket Material

PVC (Polyvinyl Chloride)

Category Performance Rating

Cat 6

Wire Gauge

26 AWG

Shielded/Unshielded

Shielded

Conductor

4-Pair Twisted

Shield Type

STP

Cable Type

Ethernet Patch Cable

Jacket Rating

Standard / Non-Rated

Cable Diameter

6.2 mm

Connector Type

Booted, Snagless

Indoor/Outdoor

Indoor

Connector 2

RJ-45 Male

Connector 1

RJ-45 Male
