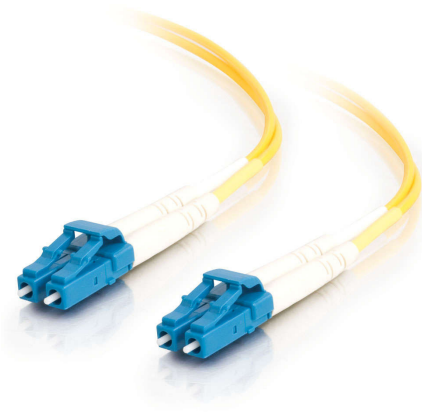




C2G
65.6ft (20m) LC-LC 9/125 OS2 Duplex Single-Mode Fiber Optic Cable - Plenum CMP-Rated - Yellow
Part No. CG-34557



Cost-effective solution that provides high bandwidth and transmission rates over longer distances. With LC to LC termination, this high quality fiber optic patch cable is specifically designed for gigabit ethernet applications. The plenum rating provides the fire protection required to run this cable within walls and air plenums without using conduit. The patented injection molding process provides each connection greater durability in resisting pulls, strains and impacts from cabling installs.

Each cable is 100% optically inspected and tested for insertion loss before you receive it. A pull-proof jacket design surrounds the popular 9/125 Single-mode fiber, immune to electrical interference.

Features & Benefits

Designed to support gigabit ethernet applications	Plenum CMP rated for cable runs through walls and drop ceilings with plenum air space
Patented injection molding process for greater durability	Optically inspected and tested for insertion loss
Pull-proof jacket design, immune to electrical interference	

Specifications

General Info

Product Line	C2G	Color	Yellow
UPC Number	757120345572	Country Of Origin	China
Application Sector	Commercial, Industrial	Warranty Type	Lifetime
Type	Cable		

Dimensions

Product Length US	65.6 FT	Cable Length	65.6 ft
-------------------	---------	--------------	---------

Technical Information

Fiber Optic Cable Type	OS2, Single-Mode	Jacket Material	PVC (Polyvinyl Chloride)
Jacket Application	Plenum Rated	Bend Radius	50 mm
Simplex/Duplex	Duplex	Cable Type	Fiber Optic
Jacket Rating	CMP Rated, FT6 Rated	Connector 2	LC Male

Connector 1

LC Male

Fiber Size

9/125
